

## LIGHT EQUIPMENT

### MOVING BEAMS

#### PES-7R



Power supply: 100-240V, 50/60Hz  
Power Consumption: 300W @ 230V/50Hz

#### Lamp:

- Philips MSD platinum 7R
- Output Lamp power: 230W
- Colour temperature: 8,000
- Luminous flux: 15,500
- Average life: 2,000 h

#### Color wheel:

- Color wheel: 14 fixed colors.
- Rainbow effect in both directions.
- Easy calibration and maintenance by magnetic home positioning.

#### Gobo wheel

- Gobo Wheel: 17 fixed gobos, indexable,
- Easy calibration and maintenance by magnetic home positioning.

Prism: 8-facet rotating prism Frost.

Zoom: From 1°-3.8°

#### Movement

- Pan: 540°
- Tilt: 270°
- Pan/Tilt moving speed adjustable.
- Automatic Pan/Tilt correction.
- Easy calibration and maintenance by magnetic home positioning.
- Pan/Tilt position lock for transporting protection.
- Dimmer/Shutter
- Mechanical dimmer
- Mechanical shutter and adjustable speed strobe effect

#### Optical system

- High efficient Optical system.

Control channel: 16CH or according to customer's requirement.

Focus: Electronic.

Cooling: Fan cooling Protocols

- DMX 512
- Data input/output: 3/5 Pin XLR socket



## MOVING SPOTS

### iSolutions iMove 250 S



DMX channels: 16/8 channels switchable  
 Remote lamp on/off control, and easy lamp access  
 Thermal sensor to control the lamp ignition; ensures the lamp is ignited at the correct temperature  
 Setting and addressing: 4 digit blue LED display. LED display with on/off setting function  
 Consistent DMX configuration enables iMove to be linked with iScan, iRock and iShow  
 Remote DMX addressing (RDA): DMX address can be set remotely by iLead controller  
 When the DMX signal is absent, the iMove will switch to Master/Slave mode automatically  
 Easy installation, easy addressing and easy operation  
 Pan: 540 degrees, Tilt: 270 degrees  
 Pan/Tilt resolution: 16-bit (16 channel)  
 Automatic Pan/Tilt correction Pre-programmed function  
 Automatically switches between music trig or auto trig mode  
 Master/Slave mode  
 Built-in fabulous lighting shows for instant operation  
 User friendly Easy Controller (CA-8): Provides various lighting shows at your fingertips  
 Gobo wheel: 7 rotating, interchangeable gobo's plus open  
 Gobo shaking effect  
 Colour wheel: 9 trapezoid dichroic colours plus white  
 Rainbow effect in both directions  
 Effect Wheel  
 Rotating Prism  
 Dimmer/Shutter 0 - 100% dimmer  
 Independent shutter/variable speed strobe  
 Automatic focus by DMX control  
 High quality optical lens and dichroic colors  
 Beam angle: 13 degrees

#### Specification:

Power supply: 240v  
 Lamp: MSD/NSD 250w  
 Replacement lamp: Lamp80  
 Dimensions: 428 x 371 x 466mm  
 Omega clamp hole centers: 240mm  
 Weight: 23kgs

### iSolution iMove 575S



DMX-512 control channels: 16/8 Channels Switchable  
 Setting and addressing: 4 digit blue LED display  
 LED display with on/off setting function  
 Data in/out: Locking 3-pin XLR iSolution operation  
 Consistent DMX configuration enables iShow to be linked with iRock and iMove  
 DMX address can be set remotely by iLead controller  
 No need to calculate the DMX channels of each fixture in the chain  
 When the DMX signal is off, the lights will switch to master/slave mode automatically  
 Easy installation, easy addressing, and pre-programmed function  
 Automatic switching between music trigger or auto trigger mode  
 Master/Slave mode  
 User friendly easy controller:  
 Enjoy various lighting shows at your fingertips.  
 Pan/Tilt -Pan: 540 degrees; Tilt 270 degrees - Pan/Tilt resolution: 16-bit (16 channel) -  
 Automatic Pan/Tilt correction  
 Magnetic Pan/Tilt home positioning for easy calibration and maintenance  
 Gobo wheel - Static gobo wheel: 9 gobo's plus open (all replaceable)  
 Rotating gobo wheel: 7 rotating, interchangeable gobo's plus open  
 Magnetic gobo wheel home positioning for easy calibration and maintenance  
 Colour wheel - 9 trapezoid dichroic colours plus white - Rainbow effect in both directions  
 Magnetic colour wheel home positioning for easy calibration and maintenance  
 Effect wheel - Prism - Rotating prism  
 Dimmer/Shutter - 0-100% - independent shutter / variable speed strobe, 1 - 10 flashes per second Optics  
 High quality optical lens, dichroic colours and gobo's  
 Beam Angle: 14 degrees

#### Specification:

Power supply: 240v  
 Lamp: HMI 575w / MSI 575w  
 Replacement lamp: Lamp71 / 71a  
 Dimensions: 427 x 478 x 369mm  
 Weight: 27kgs

### iSolution iMove 700S



Lamp: HTI 700  
DMX Channels: 22/16 (switchable)  
DMX Addressing: Scroll wheel menu selection with LCD graphic display  
Remote Addressing via iLead  
Stand Alone Mode  
Master / Slave Mode  
Sound Active Mode  
In-built programmes  
Pan: 540 degrees/Tilt: 270 degrees  
16 Bit Pan/Tilt: (22 channel mode only)  
Automatic Pan/Tilt correction  
Gobo Wheel 1: 5 Indexable Rotating, replaceable + open  
Gobo Wheel 2: 5 Static, replaceable + open  
Gobo Size: Outer 50.4mm, Image 42.5mm  
Gobo Shaking Effect  
Colour Wheel 1: 6 Dichroic colours + White  
Colour Wheel 2: 6 Dichroic colours + White  
Rainbow Effect in Both directions  
Shutter / Variable Strobe  
Dimmer 0 - 100%  
Rotating Prism  
Beam Angle: 15 degrees  
Focus: Automatic by DMX  
Iris: Motorised, Stepless with speed control  
Frost filter  
3 Pin DMX connection  
Macro facility  
Safety locking system for transportation  
Omega Quick Lock system  
Remote lamp on/off control, and easy lamp access

#### Specification:

Power supply: 240v  
Dimensions: 471 x 406 x 674mm  
Weight: 32.6kgs

### MOVING WASH

#### PES - 360 W



**36\*4in1 10w wash moving wash**  
Light Sources: 36 x 4in1 10W RGBW  
Beam Angle: 25°  
Power Consumption: 400W/450W  
Power Voltage: AC 100-240V, 50/60Hz  
Dimension: **37\*27\*22 cm**  
Packing Dimension: 41\*32\*45cm  
Net Weight: 10Kgs  
Gross Weight: 11Kgs

**Control**  
DMX Channel: 13 Channel  
Control Modes: DMX

**Pan/Tilt**  
Pan/Tilt: 540°/ 270°  
Pan/Tilt Resolution: 16 bit

**Construction**  
Display: LCD Display  
Data In/Out socket: 3-pin XLR sockets  
Power Socket: Powercon in  
Protection Rating: IP20

**Features**  
Outstanding color macro effect  
Dimmer: 0~100% smooth dimming  
Variable strobe effects  
Fast, quiet operation and flicker free

## iSolutions iMove 575 W



16 DMX channels : 16/8- channel switchable  
 Setting and addressing: 4 x 7 segment blue LED display. LED display with on/off setting function.  
 Data in/out : Locking 3-pin XLR iSolution operation  
 Consistent DMX configuration enables iMove series to be linked with iRock, iShow and other iSolution effects  
 Remote DMX Addressing (RDA): DMX address can be set remotely by iLead controller  
 When the DMX signal is absent, the iMove will switch to Stand Alone mode automatically  
 Easy installation, easy addressing, and pre-programmed function  
 Stand alone mode  
 Built in dynamic lighting shows for instant operation  
 User friendly easy controller (CA-8): has various lighting shows at your fingertips  
 Pan: 540 degrees Tilt: 270 degrees  
 Automatic PAN/TILT Correction. CMY Mixing system  
 Cyan: 0 - 100%, Magenta: 0 - 100%, Yellow: 0 - 100% Colour wheel  
 9 trapezoid dichroic colours plus white  
 Rainbow effect in both directions  
 Effect Wheel  
 Frost filter and diagonal lens Dimmer/ Shutter 0 - 100% dimmer  
 Independent shutter/ variable speed strobe  
 Zoom: Automatic adjustable beam angle 11 - 28 degrees by DMX value  
 High efficiency optical system  
 High quality lens and dichroic colours  
 Auto focus  
**Specification:**Power supply: 240v  
 Lamp: MSD 575w / NSD 575w  
 Replacement lamp: Lamp72a  
 Dimensions 427 x 478 x 369mm  
 Weight 27.0kgs

## COLOR CHANGERS

### Futurelight PPC 1200



\* DMX-controlled operation or stand alone operation with Master/Slave-function  
 \* 48 preprogrammed scenes in Program Run for stand alone operation  
 \* Number of scenes in Program Run can be changed individually  
 \* The scenes in Program Run can be modified via the Control Board or via an external controller and loaded into the memory  
 \* 8 built-in programs can be called up via DMX-controller  
 \* Sound-controlled via built-in microphone  
 \* Lightbeam with 27° radiation angle  
 address, Program, Reset, lamp on/off  
 \* For bright 1200 W lamp  
 \* Colour-wheel 1 with 5 different, dichroic colour-filters and white  
 \* Colour-wheel 2 with 4 different, dichroic colour-filters, blackout and white  
 \* DMX-control via every standard DMX-controller  
**SPECIFICATIONS:**  
 Power consumption: 1250 W  
 DMX-control-channels: 4  
 DMX-512-connection: 3-pin XLR  
 Sound-control: via built-in microphone  
 Colour-wheel 1: 5 colours and white  
 Colour-wheel 2: 4 colours, blackout and white  
 Dimensions (LxWxH): 470 x 410 x 450 mm  
 Weight: 18 kg

## LIGHT MIXING CONSOLE

### WHOLE HOG II



The Wholehog-II from Flying Pig Systems/High End Systems. Highly respected control for the demanding production, available to hire from Point Source. The Whole Hog 2 is supplied with 2 x17" TFT monitors.

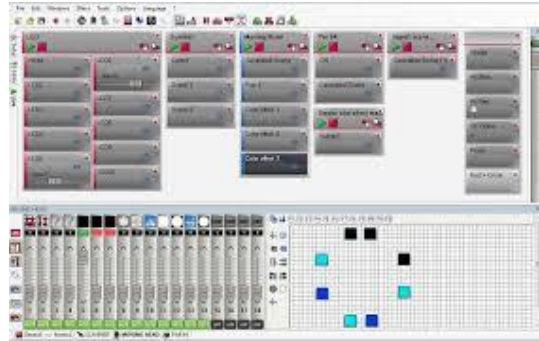
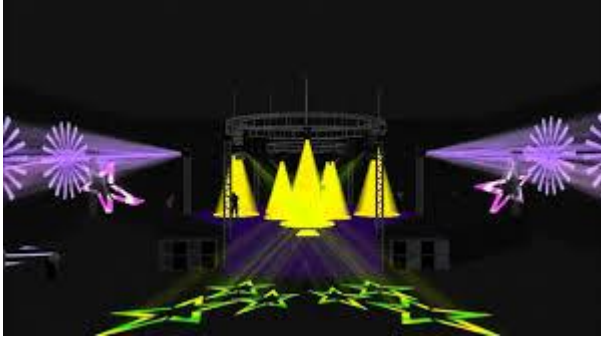
Also available is the Hog II Overdrive unit for doubling a single universe output into two independent universes. This may only be used on universes 2 to 4.

- 4 DMX universes
- DMX input
- 8 Playback masters
- 2 built-in LCD touch-screens
- 2 External SVGA monitor ports
- Full time-code facility
- Dimensions: 668mm x 588mm x 153mm
- Weight 22kg



### DAS LIGHT USB/DMX interface





## FOLLOW SPOTS

### LDR CANTO 2000



#### FEATURES:

- Beam style: well-defined, flat field profile projection
- Suitable for: small, medium scale theatre and TV studios
- Specification level: professional range
- Beam angle: 8° - 22°
- Typical throw distance: 10 – 20m
- Supply Volts: 90-265V AC single phase
- Lamp base: GZY 9.5
- Auto-disconnect: no
- Cable/connection: 2m 3x1.5mm<sup>2</sup> flexible cable to bare ends
- Lamp House Construction: extruded aluminium and sheet steel
- Ballast: flicker-free, electronic ballast. built-in
- Reflector: 68mm diameter, aluminium
- Optical system: double condenser with variable zoom
- Mounting & suspension: steel stirrup with 12mm centre hole and DIN mounting
- Spigot: for Ø28mm tube supplied
- Accessory runners: 3 slots
- Safety guard: optional accessory
- Colour frame: metal, 185 x 185mm, supplied
- Lamp access: lowering base
- Lens access: sliding panels beneath lamp tube
- Focus adjustment: slide zoom controls at side
- Lamp alignment: factory set
- Beam Shaping: 20-leaf iris included; shutters are accessories
- Dimming: optical dimmer iris, included
- Handle: large rear and side

#### PHYSICAL DATA:

- Dimensions: 980 x 350 x 430mm
- Weight/Packed weight 15,1kg / 20,4kg

**SPOT LIGHTS**

**ETC Source Four JR. Zoom 25-50**



**PAR 64 1.000 W**



**PAR 56 300 W**



**REDHEAD 800 W**



**BLONDE 2000W**



**HALOGEN 500 & 1000 W**



**MHI 150 W**



**LED reflector 30 W & 50 W**





## STAGE EFFECTS

FOG machines



LOW FOG machines



Stroboscops



UV canon

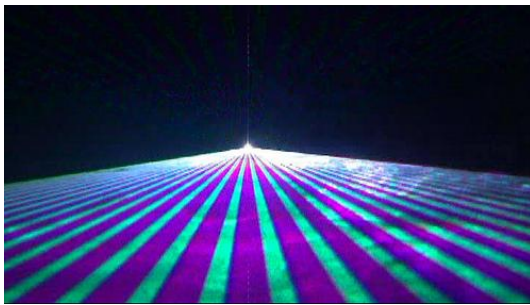
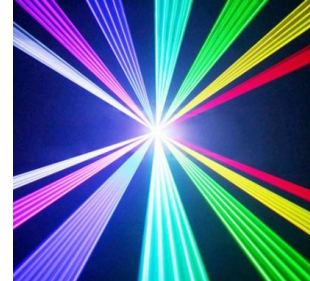


Mirror ball



**LASERS**

**MEDIALAS Mistique 3W RGB**



**SPOOKY BLUE 650 mW / green & red**

