



LIGHTING



LIGHTING

- **MOVING LIGHTS**
- **MOVING WASH**

- **EPL 3618**

Super Bright Wash Led moving head, 36 RGBWAUV 18w 6in1 LEDs RGBWA - UV, zoom 15-60°, Preset color macros, dimmer: 0-100%, stop/strobe effect 1-25hz, LCD display, 9.5 kg





- **EPL 1915 AR**

Wash / Beam moving head, 19 RGBW 15w 4in1 LEDs zoom 6-50°, 3 sections pixel control, preset color macros RGBW mixing with or without DMX controller, LCD display.





- **EPL 1915 B**

High power wash led fixture with pixel ring, 19x20 watt RGBW led's controlled pixel by pixel, linear zoom 4°-60° led round ring with dynamic patterns, vortex effect, color temperature adjustment, 28,38,102,114 DMX channels, theater mode, 525x380x560mm 16kg.





➤ MOVING SPOT/BEAM

- **EPR 230 W 7r**

High Light output Beam Moving head 7R Hybrid 230 W lamp, 3 phase motors, Beam aperture: 0-3.8°, 13 colors + white, 15 fixed gobos + white. Frost lens: wash effect 8 facet prism rotation, linear focus. 11,9 kg, 2m-Infinity



- **EPR 280 W 10r**

High Light output Beam Moving head 10R Hybrid 280 W lamp, 3 phase motors, Beam aperture: 0-3.8°, 13 colors + white, 15 fixed gobos + white. Frost lens: wash effect 8 facet prism rotation, linear focus. 11,9 kg, 2m-Infinity





➤ PROFILES

- **ETC Source Four Jr 25°–50° Zoom Profile**

The power of Source Four in a compact and economical size! The smaller-scale Source Four jr uses the same technology that made the standard Source Four famous. That means unsurpassed imaging and beam quality. Compared to many conventional 650W and 1000W ellipsoidal spotlights, Source Four jr's 575 watts still deliver an even brighter light and offer the flexibility of multiple HPL lamp options and interchangeable lenses. The Source Four jr is perfect for — but never limited to — smaller theater venues, churches, schools, industrials, and any other application where affordability, space-savings and great performance are the criteria.





➤ Continuous Lighting

- **GODOX L500Changeable Version (3300K~5600K)**

LED500L Daylight LED Video Light from Godox provides a smooth and soft light that is well-suited for video use. This model is daylight-balanced, offering a color temperature of 3300K-5600K that varies $\pm 300K$ depending on your settings. Dimming settings range from 10% all the way up to full power, and can be adjusted on the on-board LCD via two buttons and a dial. The LED500W is rated for output up to 2900 lux at 3.3', drawing a maximum of 32W of power during use.





➤ **LED pars P18**

Aluminum flat led par 18x18w RGBWA+UV, Beam aperture: 25°, dimming/fade, Dimmer: 0-100%, stop/strobe effect. Digital display Double yoke system, 2 kg.



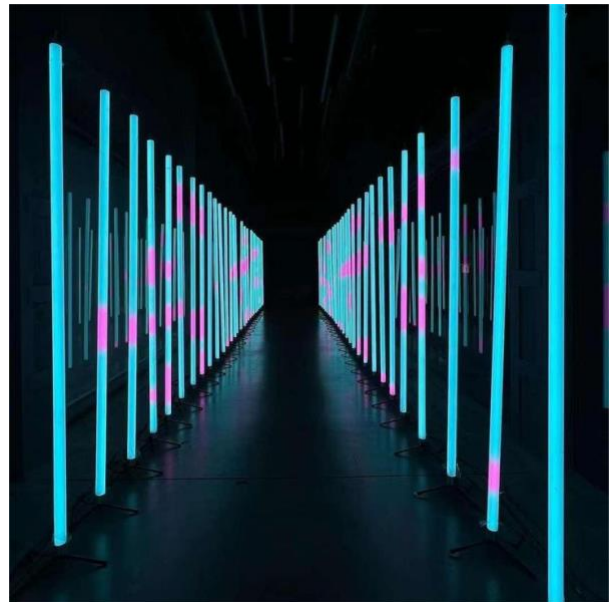


- **LED tube 28W RGBWA**

360-degree light emission ensures that the pixel tube light is evenly spread, creating a mesmerizing 3D effect that will captivate your audience. High color rendering index and adjustable color temperature (1750K-10000K) allows for true-to-life colors that are vibrant and saturated, enhancing the overall visual experience.

Light source: 28WLED

Color system: RGBWA mixed color





➤ **Sky tracker Greven MK2 4000W**

The Tracer MK2 4000 is a powerful multi-beam sky tracker that projects 15 beams visible from an outstanding distance, for a 28° beam aperture.

Performance depends on ambient light and atmospheric conditions.

Unfavorable weather conditions and surrounding light pollution may affect the normal visibility of the beams.

The latest development features control via standard DMX 512 signal, for a total of 4 channels, allowing accurate selection of preset beam rotation speed, scanning amplitude and scanning speed, as well as strobe and blackout functions. The Given Tracer MK2 4000 has a housing fully weatherproofed.





➤ **Audience Light/Blinders 4 x 100W COB**

Very powerful blinder, it uses 4pcs high power 100W COB LED It can adjust the beam angle, Output: 35,000 lumens, Warm White, Optical lens: 60°, Color temperature: 3000K, IP65





LIGHTING